

CALCULATING TIME WITH CLOCKS

1. Circle the time that is 30 minutes **before** midnight.



12:30 am

12:30 pm

11:30 am

11:30 pm

3 am

2. Put these times in order, starting with the shortest.

5 minutes

20 seconds

100 seconds

1 minute



shortest

longest

3. The time is

8:15

John has to be ready for school in half an hour.

Tick (✓) the time when he has to be ready.

8:20

8:25

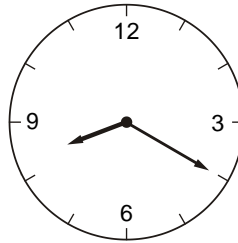
8:30

8:45

8:55

4 . Here are two clock faces.

Join each clock face to  
the correct digital time.

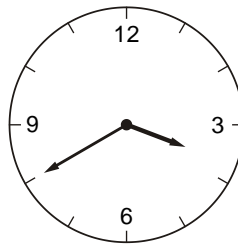


9:20

3:40

4:40

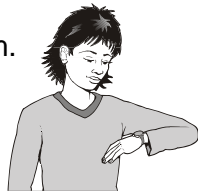
8:40



8:20

4:20

5. The time is 10:35am.




Kate says,

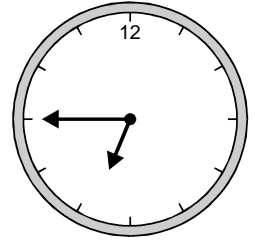
***'The time is closer to 11:00am than to 10:00am'.***

Explain why Kate is correct.



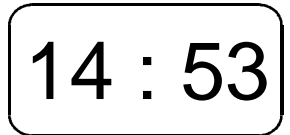
6. Here is a clock. How many minutes is it **until** this clock shows 7:30?

 .....



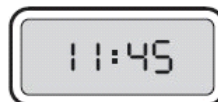
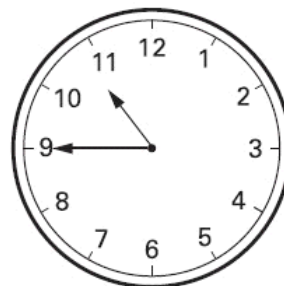
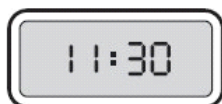
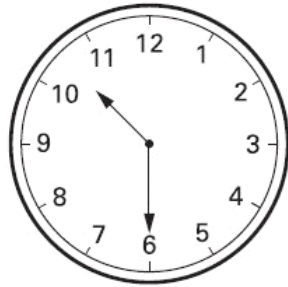
Here is another clock. What time will the clock show in 20 minutes?

 .....

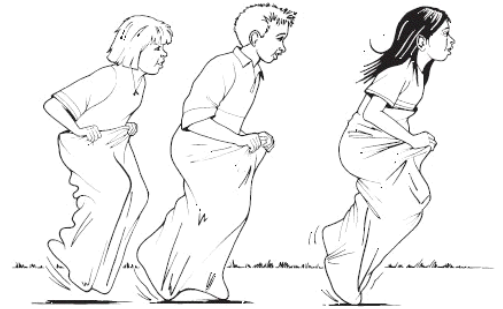


7. **Two** clocks show the same time.

Tick (✓) them.



8. The Fun Day started at this time in the morning.



It finished at this time in the afternoon.

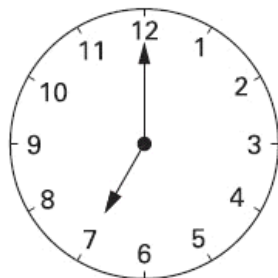


How long did the Fun Day last?

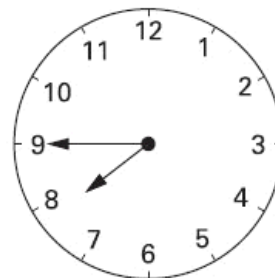


hours	minutes
-------	---------

9. These clocks show the **start** and **finish** times of a TV programme.



**start**



**finish**

For how many minutes does the programme last?

.....mins

10. Jack leaves for school at this time.


It takes him **40 minutes** to get to school.

Tick (✓) the time Jack gets to school.



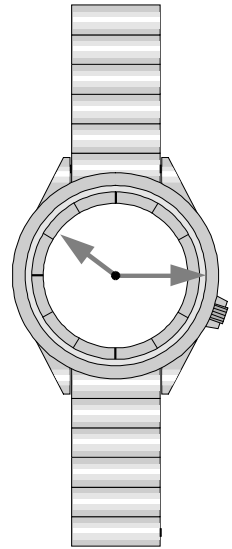
11. This was the time on Selin's watch when she **set off** for a walk.

1 What time did the watch show 20 minutes **before** this?

 .....

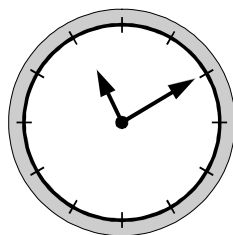
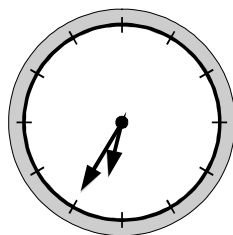
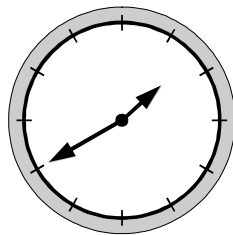
What time did it show an hour and a half **after she set off** for the walk?

 .....



12. Here are three clock faces.

Match each clock face to the same time on a digital clock.



11:10

2:55

1:40

8:10

6:35

7:35

